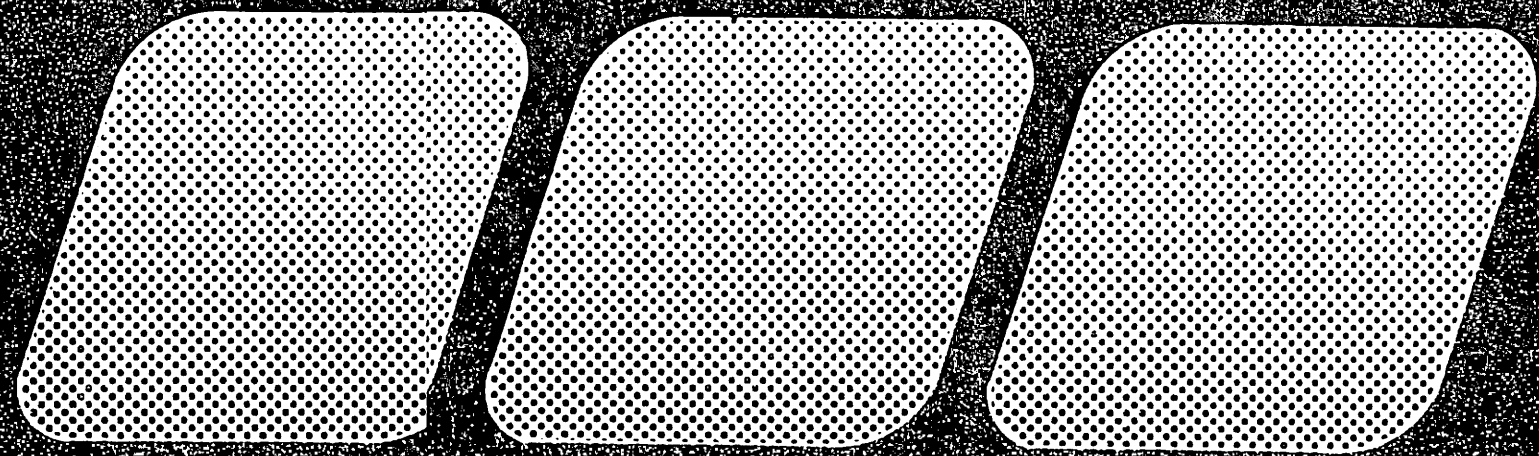


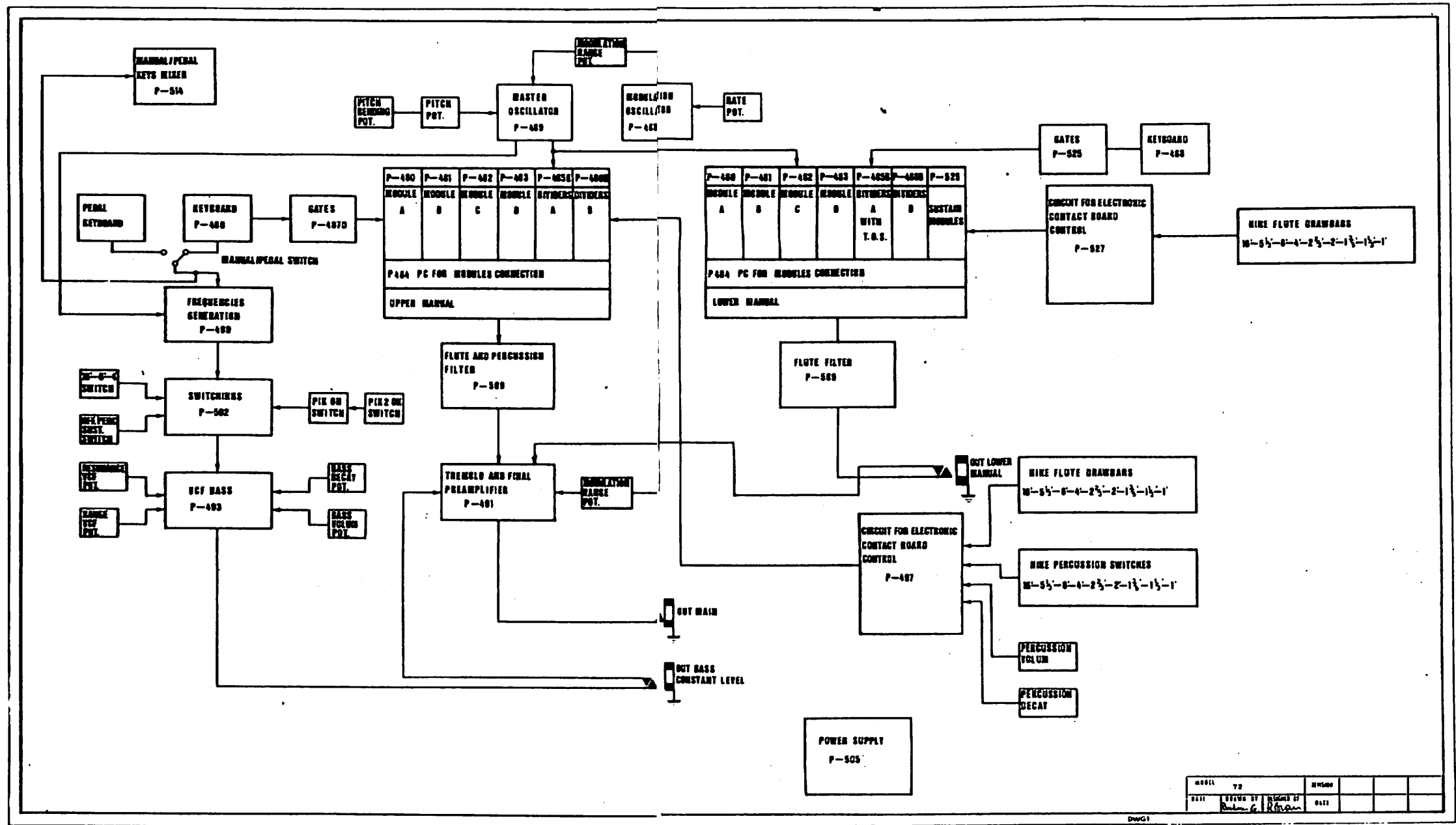
**SCHEMATIC  
DIAGRAM**

**CRUMAR<sup>®</sup>**

*Musical Instruments*

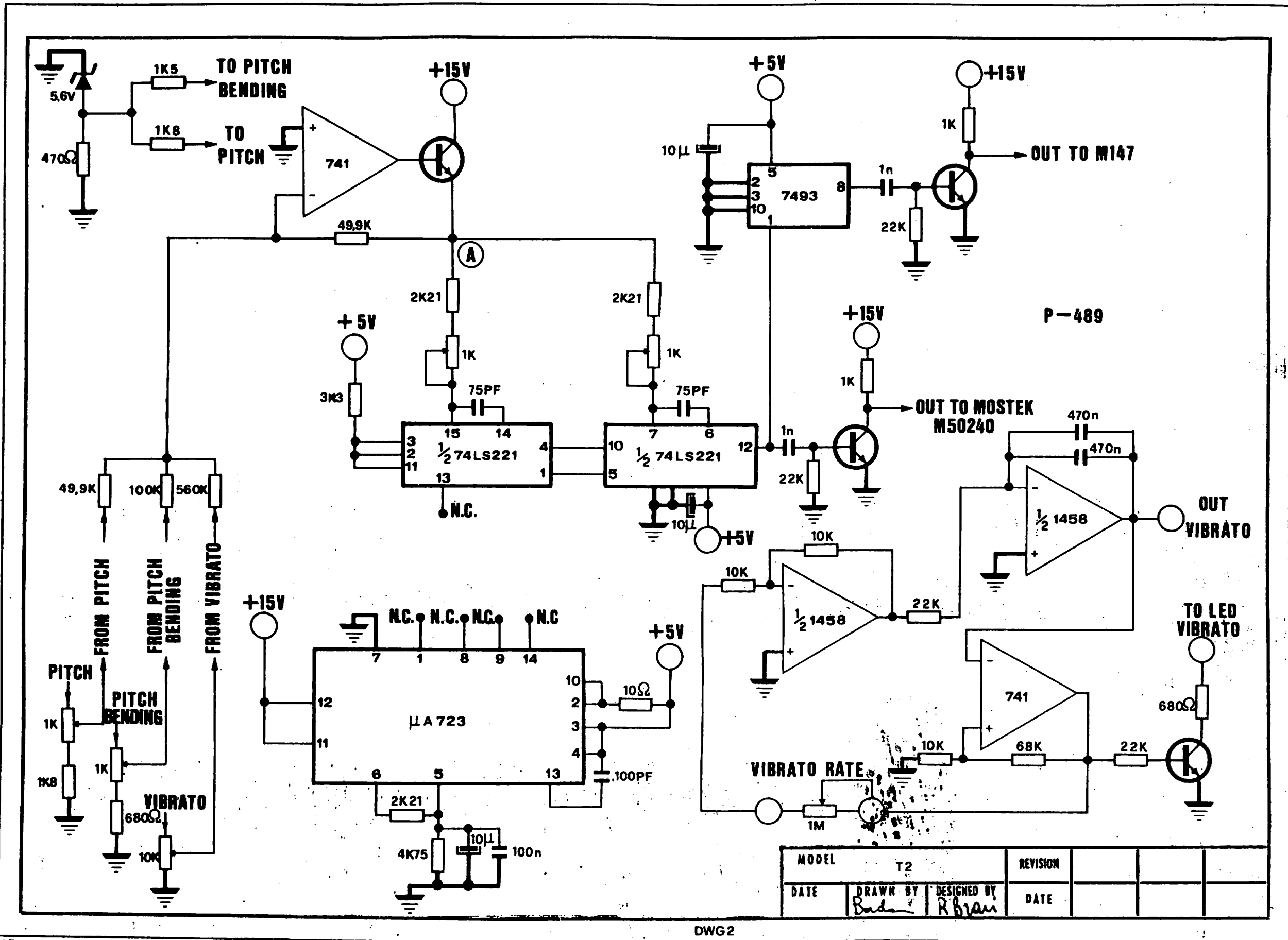


*mod.*  
**T-2**



REV	DATE	BY	CHKD	DATE
1	10/15/60	J. R. G.		

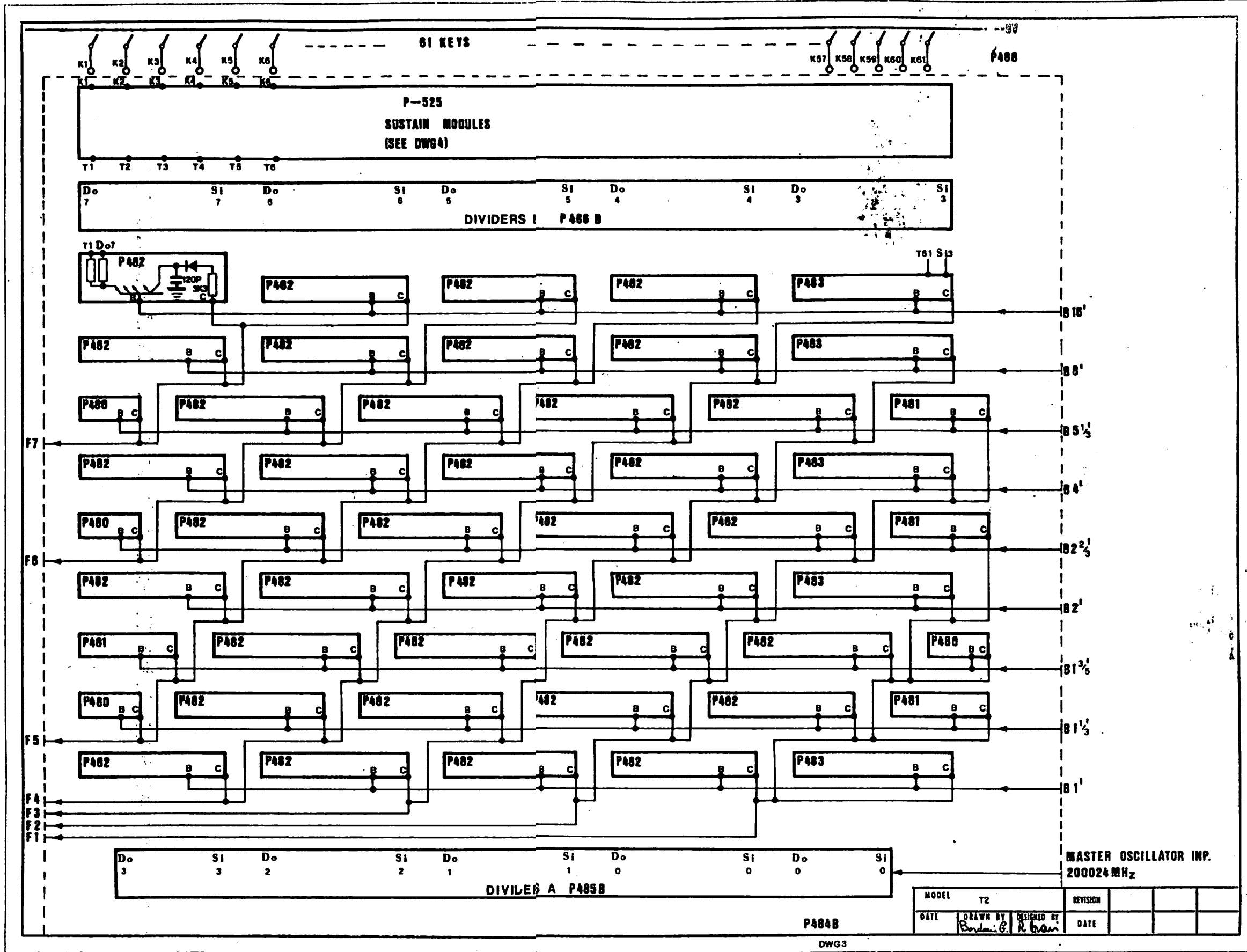
Doc 1



MODEL		T2		REVISION			
DATE	DRAWN BY	DESIGNED BY	DATE				
	<i>Buda</i>	<i>R. Bran</i>					

DWG2

**UPPER MANUAL**



61 KEYS

P-525  
SUSTAIN MODULES  
(SEE DWG4)

DIVIDERS I P486 B

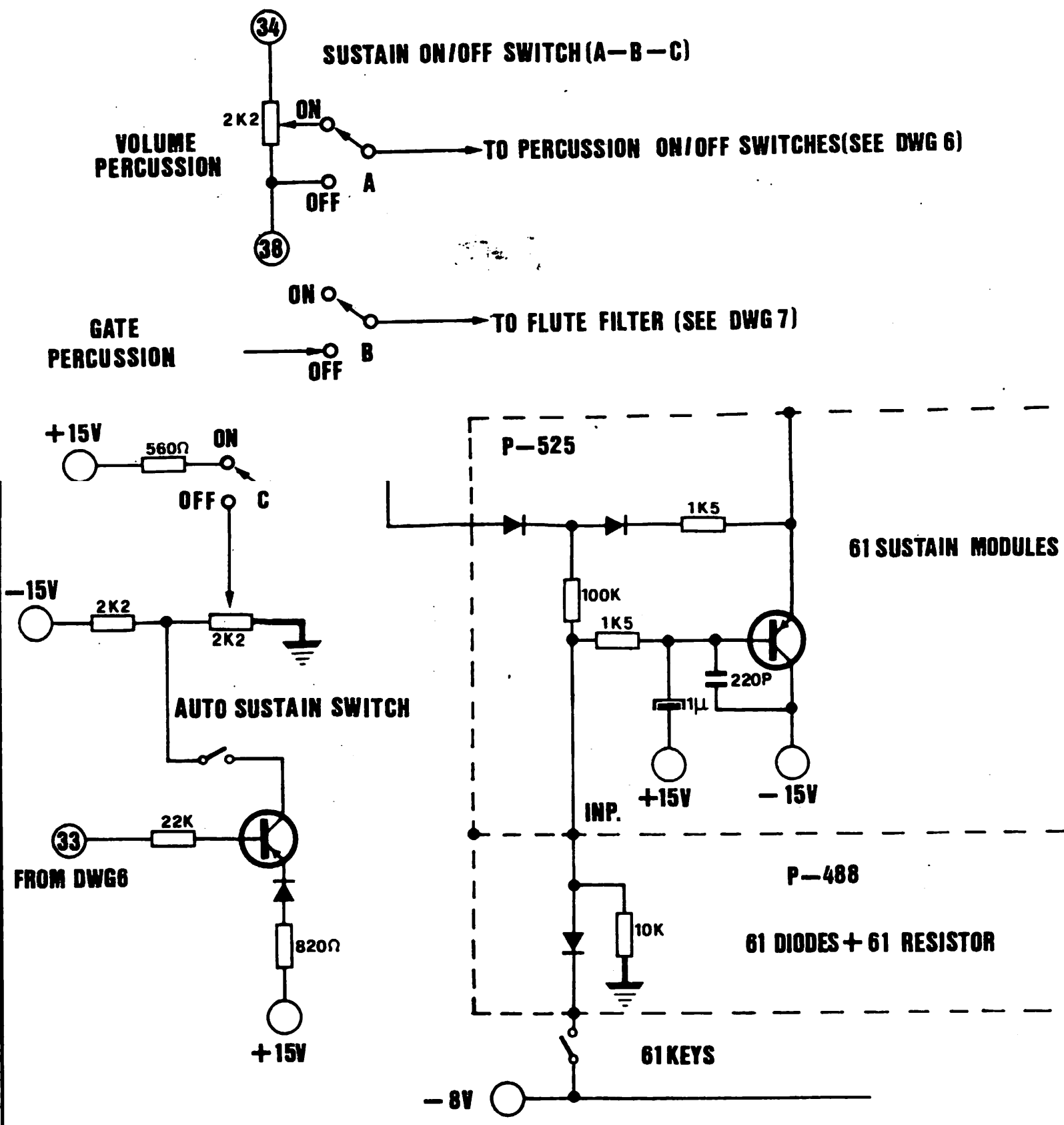
DIVIDER A P485 B

MASTER OSCILLATOR INP.  
200024 MHz

MODEL	T2	REVISION			
DATE	DRAWN BY Borden G.	DESIGNED BY R. Chan	DATE		

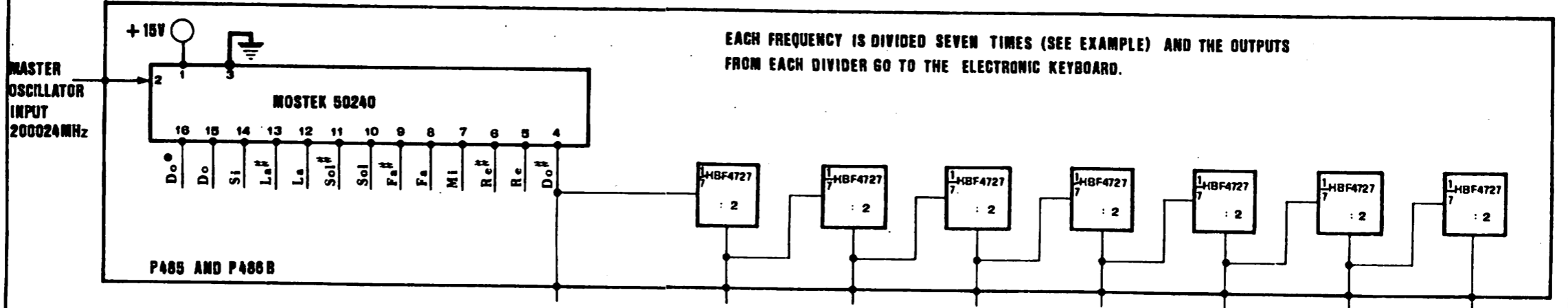
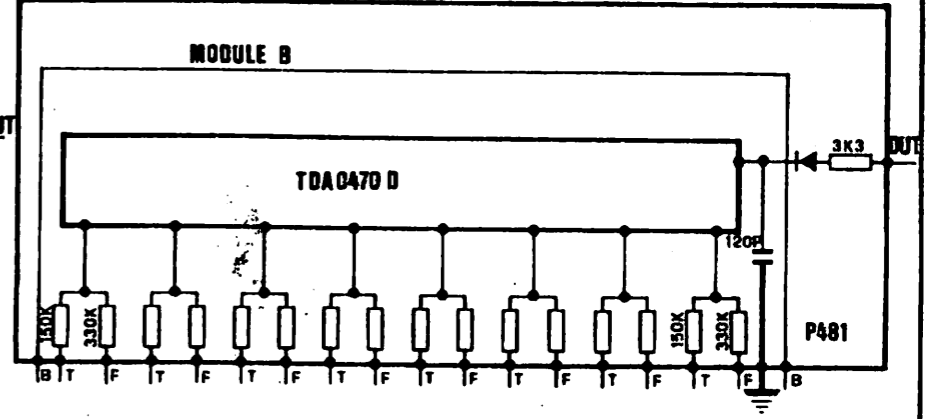
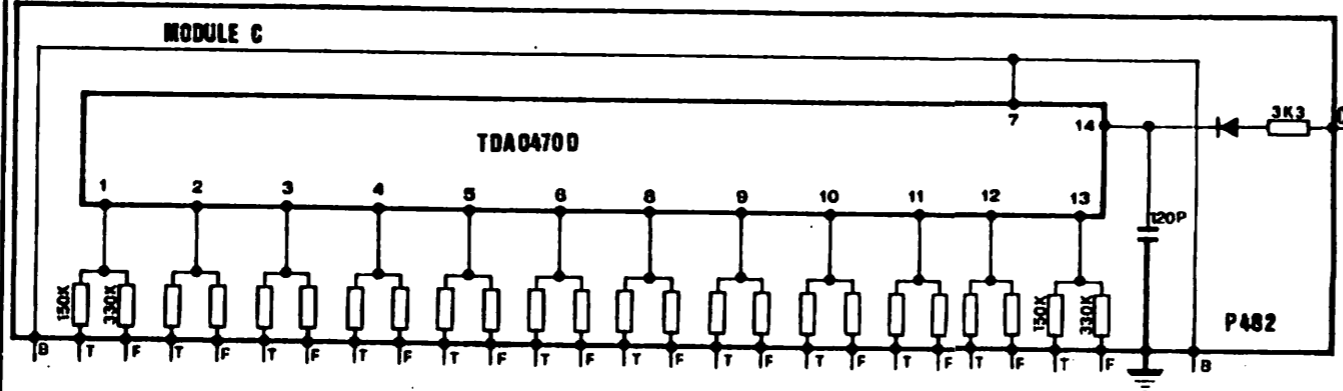
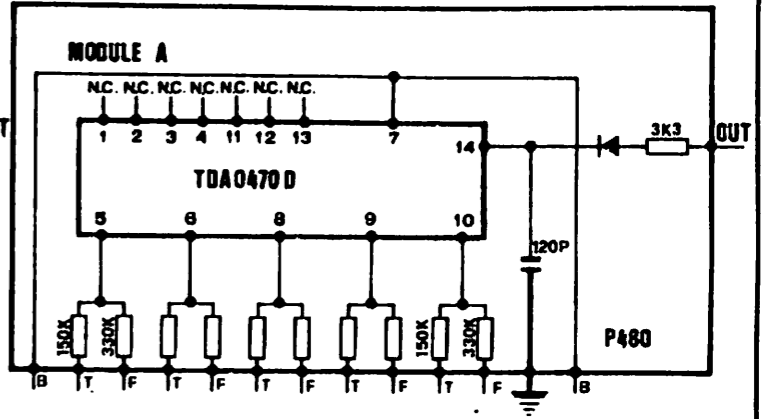
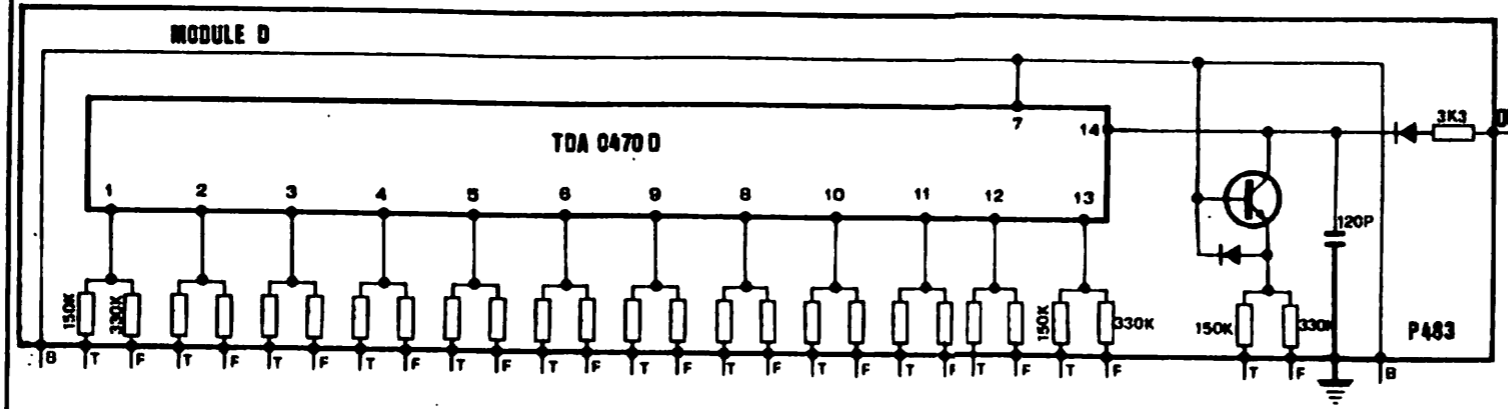
P484B

DWG3



MODEL	T2	REVISION			
DATE	DRAWN BY <i>Bordwig</i>	DESIGNED BY <i>R. Fran</i>	DATE		

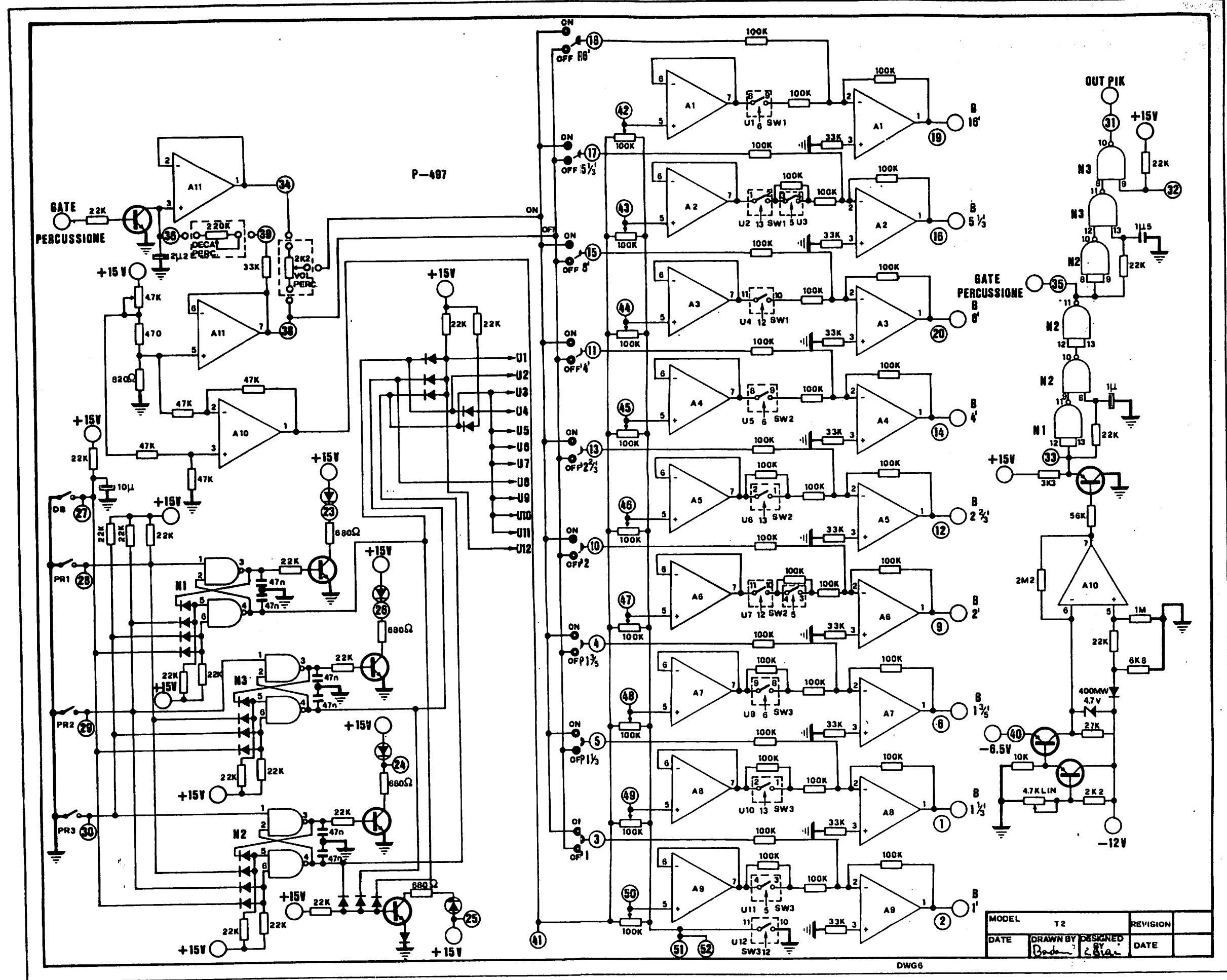
DWG 4



EACH FREQUENCY IS DIVIDED SEVEN TIMES (SEE EXAMPLE) AND THE OUTPUTS FROM EACH DIVIDER GO TO THE ELECTRONIC KEYBOARD.

F - FREQUENCY  
T - KEY  
B - BASE

MODEL	T2	REVISION			
DATE	DRAWN BY	DESIGNED BY	DATE		
	Bondar G.	R. Bravi			

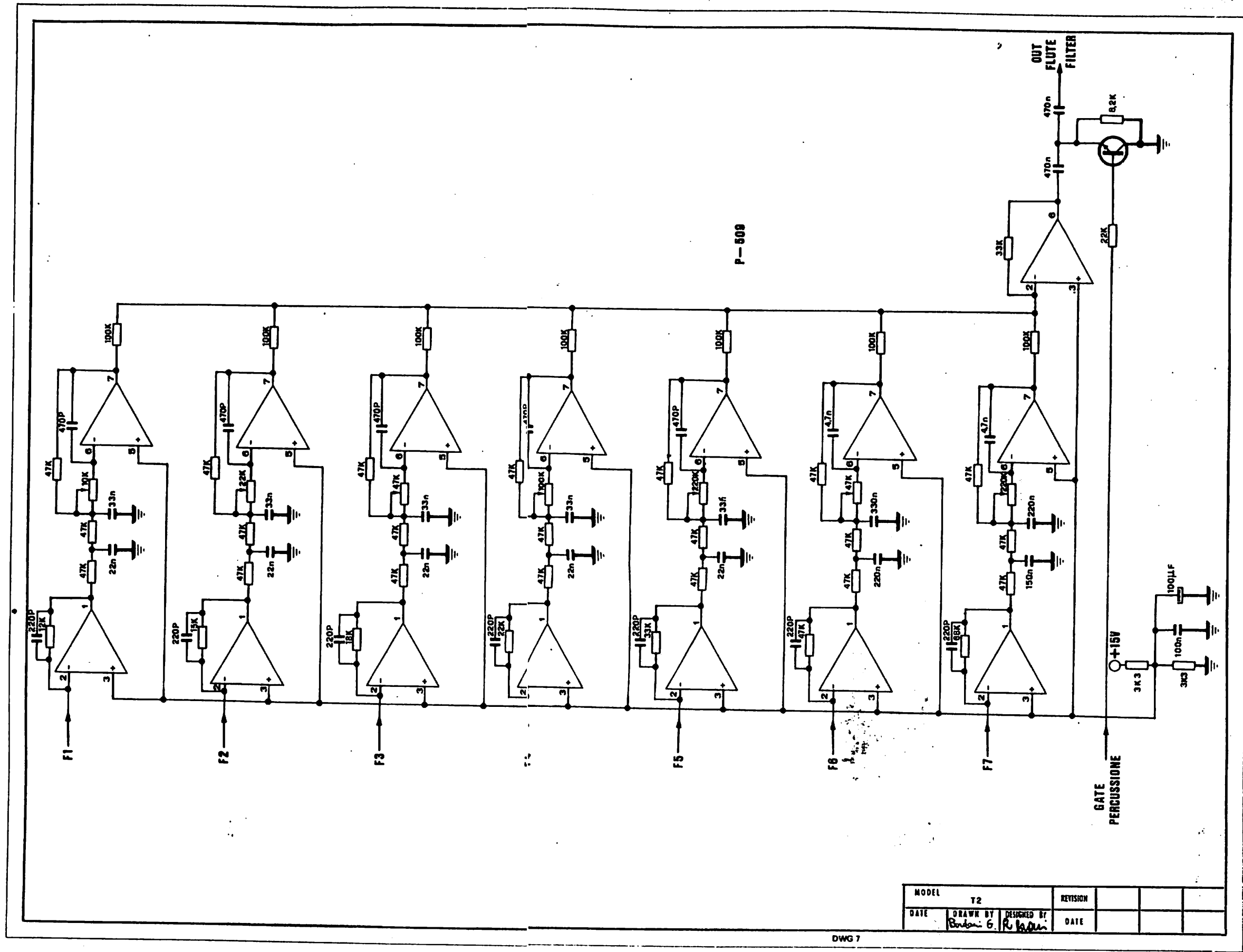


P-497

MODEL	T2	REVISION	
DATE	DRAWN BY Bodan	DESIGNED BY R. Sica	DATE

DWG6



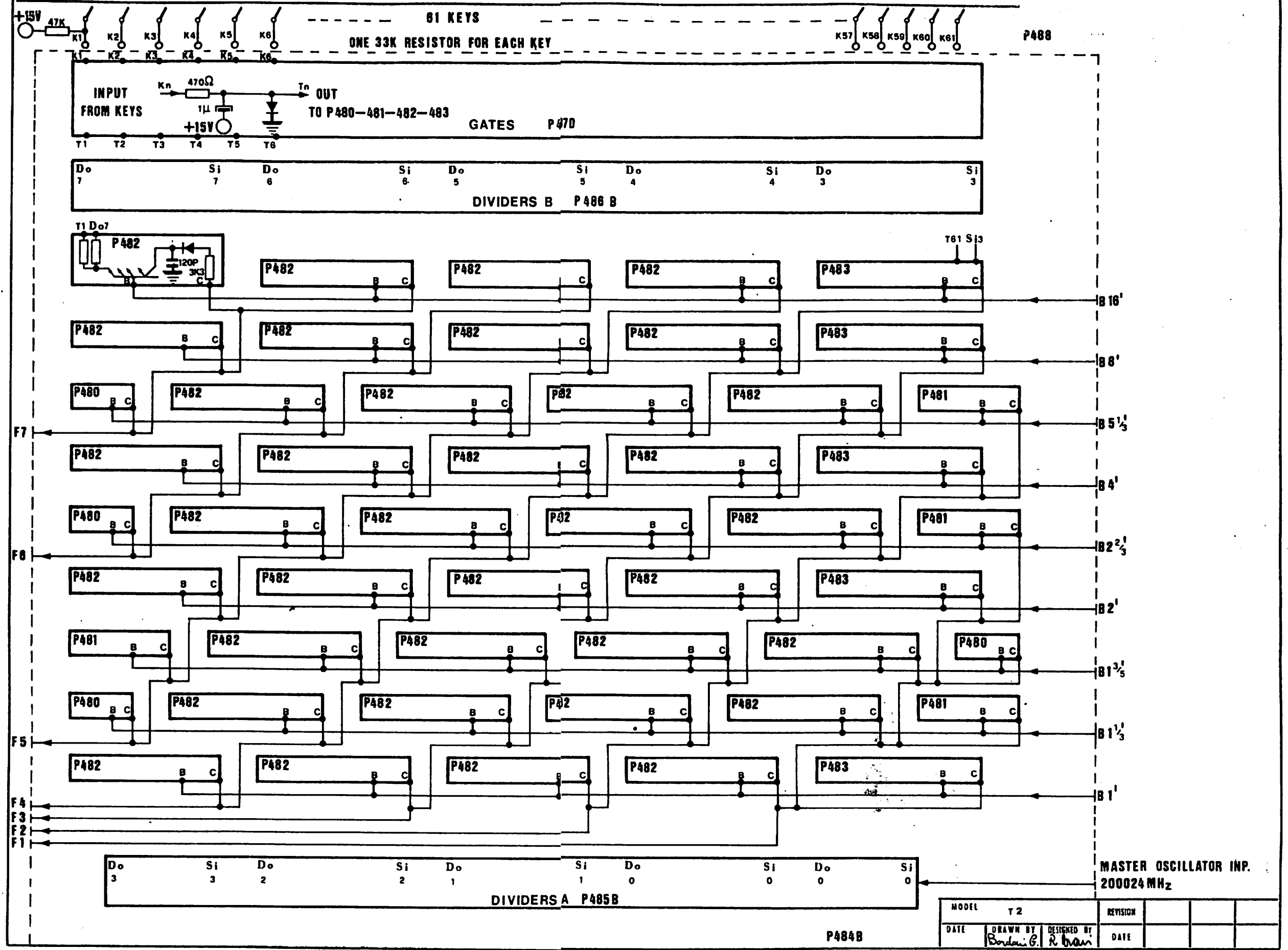


P-508

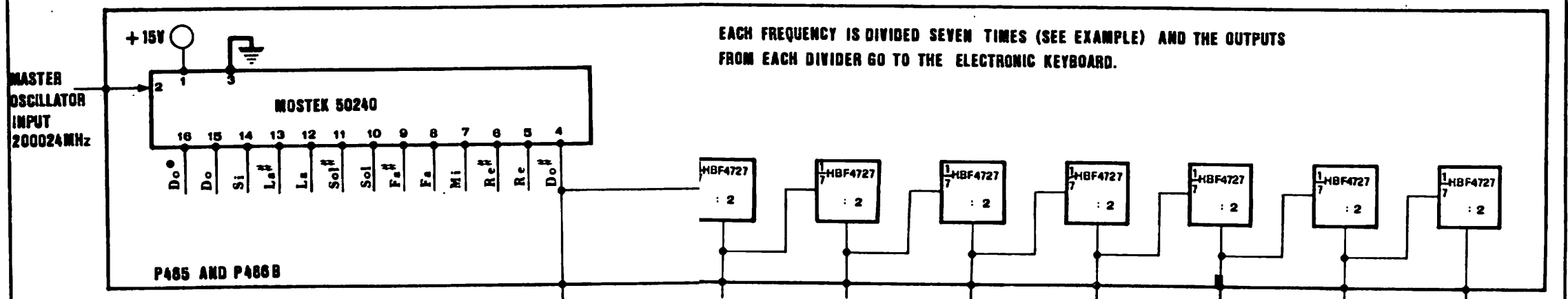
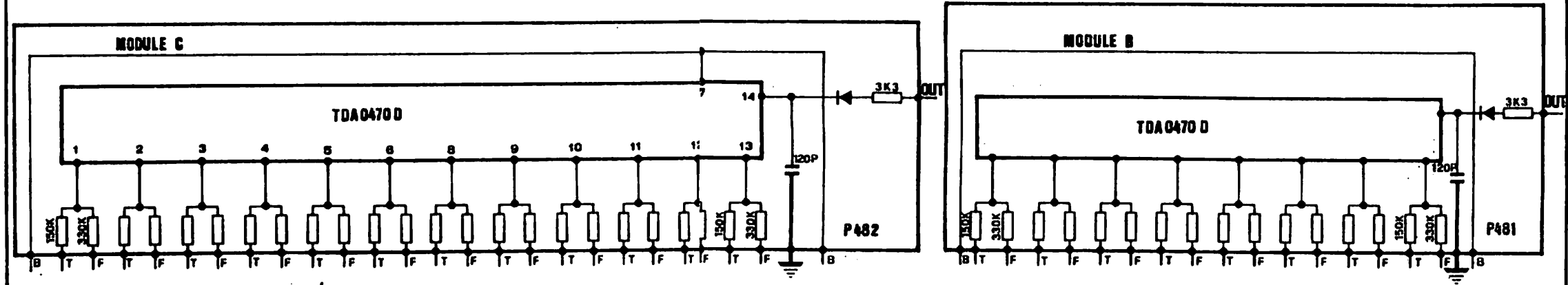
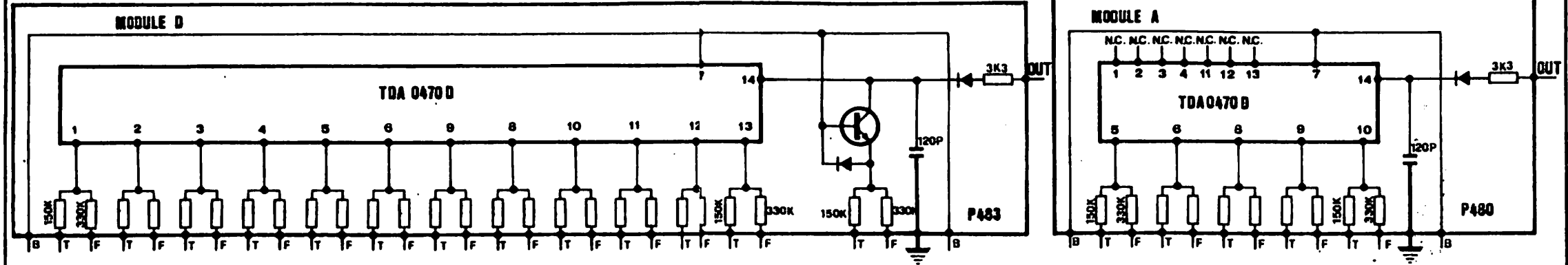
MODEL	T2		REVISION		
DATE	DRAWN BY	DESIGNED BY	DATE		
	Bob G.	R. K.			

DWG 7

**LOWER MANUAL**



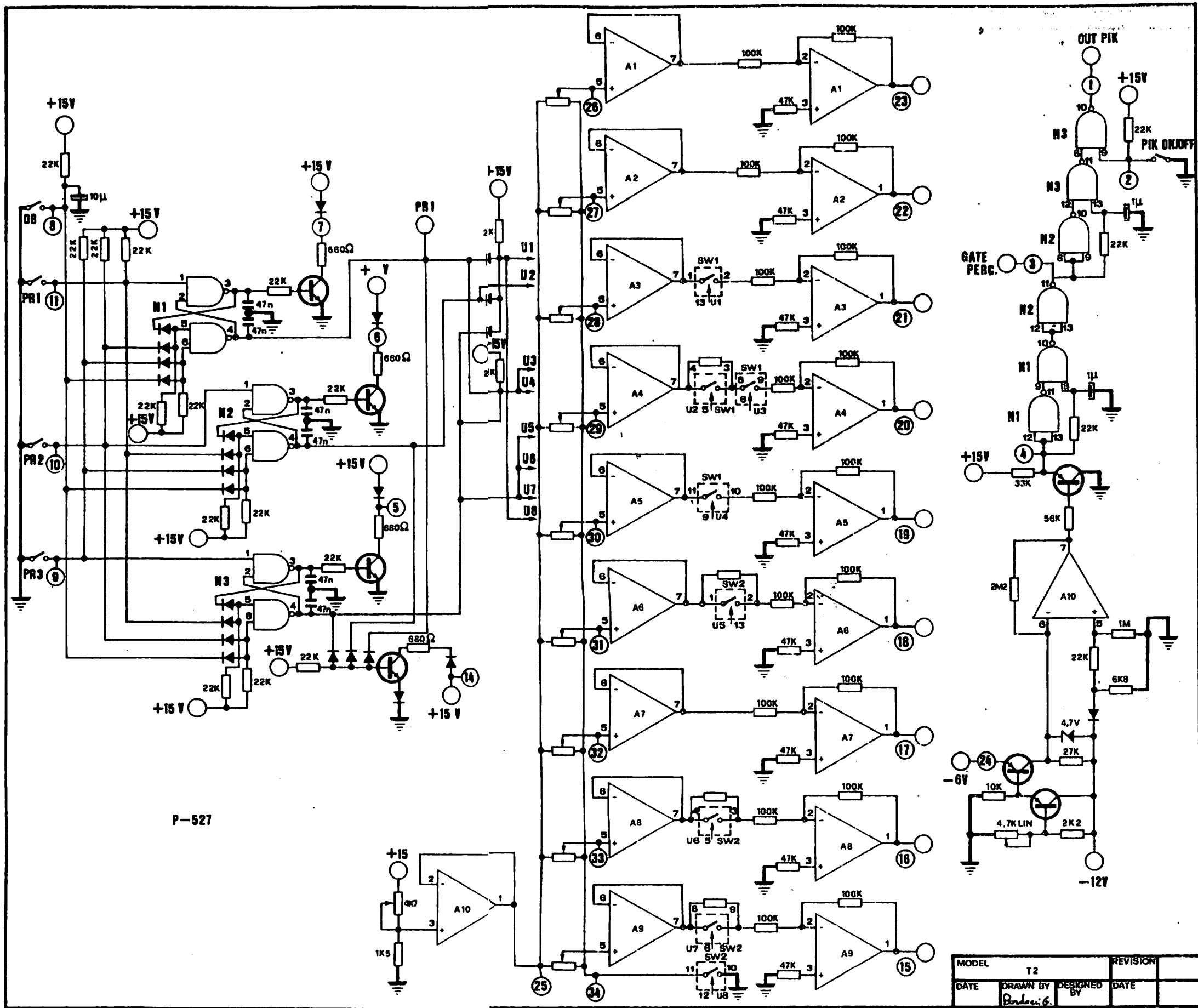
MODEL	T 2		
DATE	DRAWN BY	DESIGNED BY	REVISION
	Bordai G.	R. Ivan	DATE



EACH FREQUENCY IS DIVIDED SEVEN TIMES (SEE EXAMPLE) AND THE OUTPUTS FROM EACH DIVIDER GO TO THE ELECTRONIC KEYBOARD.

F - FREQUENCY  
T - KEY  
B - BASE

MODEL	T2	REVISION			
DATE	DRAWN BY B. G. Brown	DESIGNED BY R. Brown	DATE		

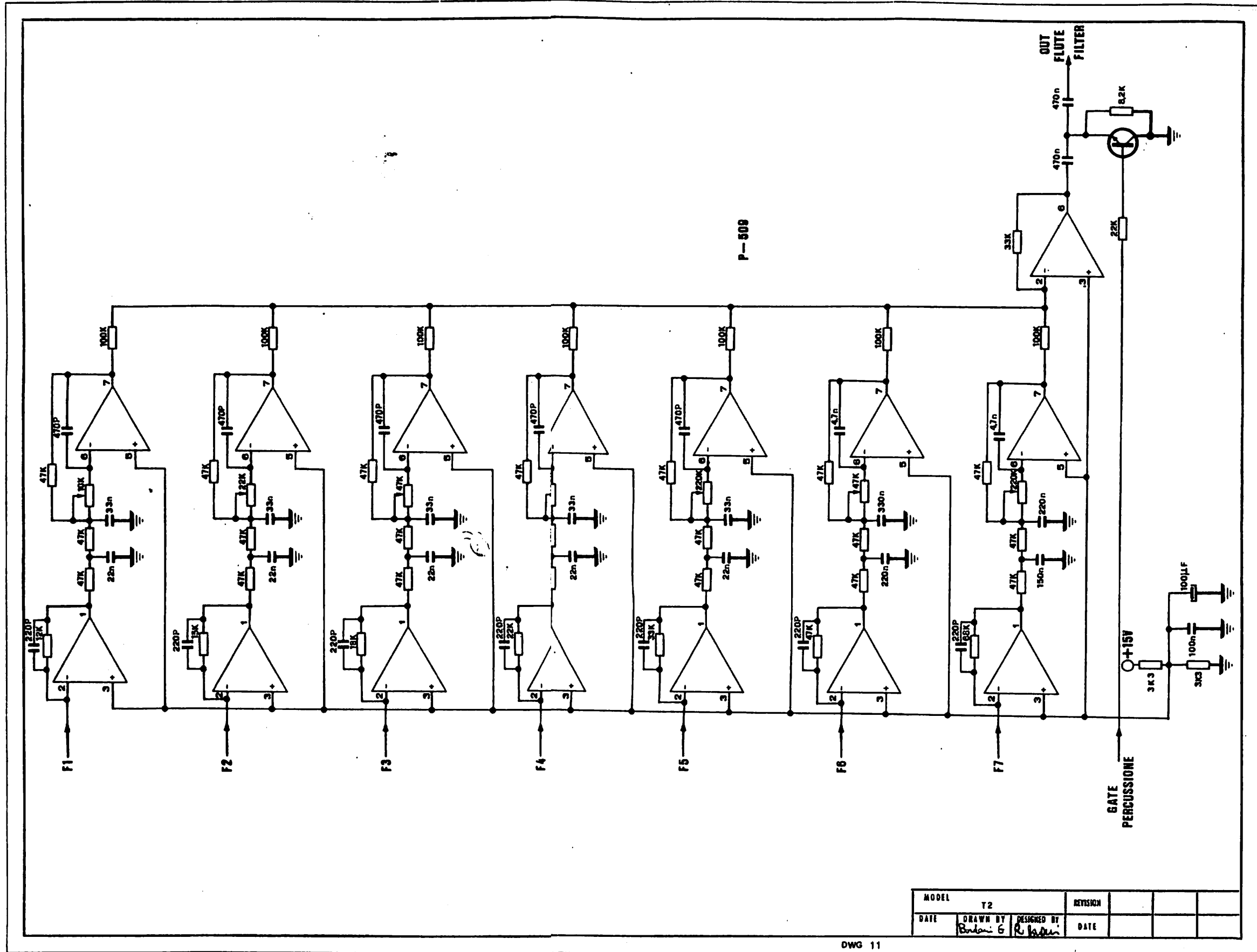


P-527

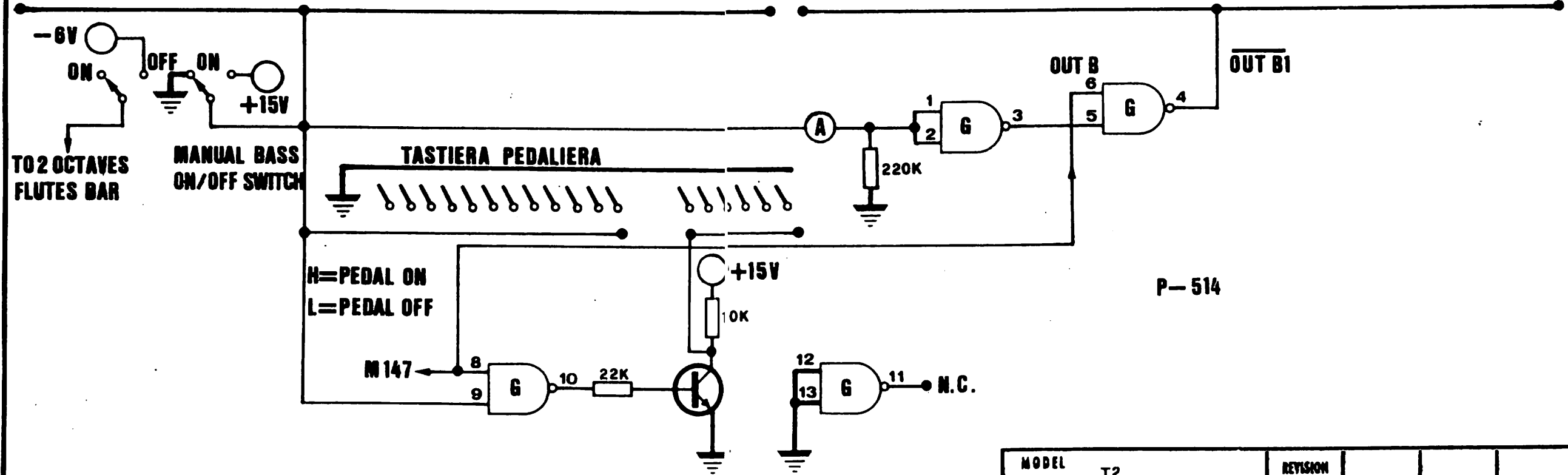
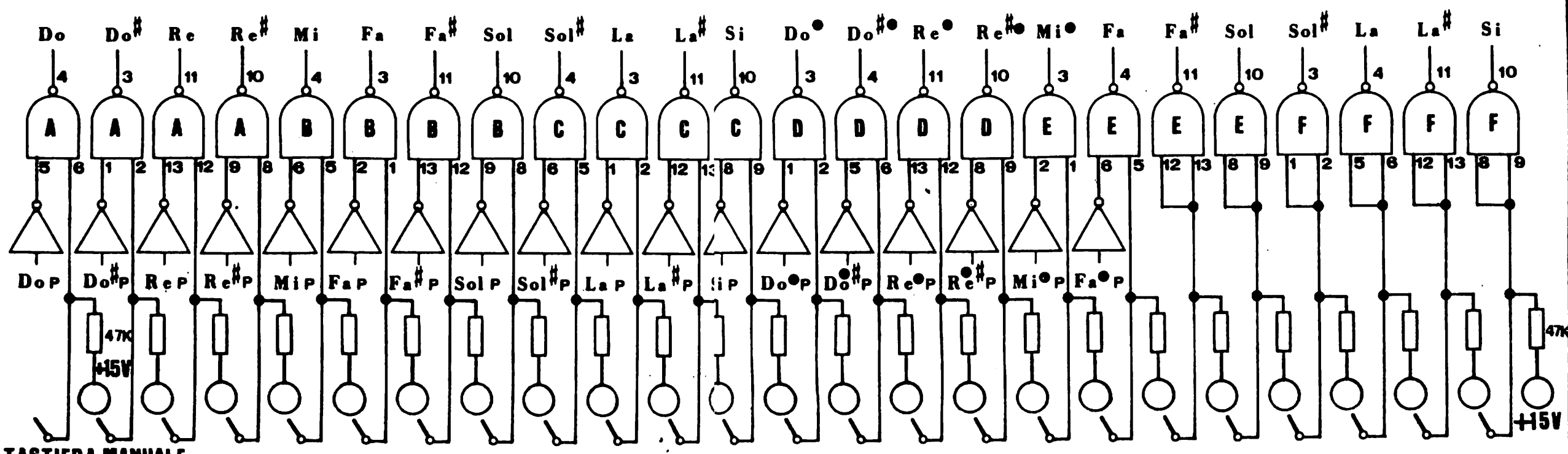
MODEL		T2		REVISION	
DATE	DRAWN BY	DESIGNED BY	DATE		
	Barber, G.				

DWG 10

**BASS SECTION**



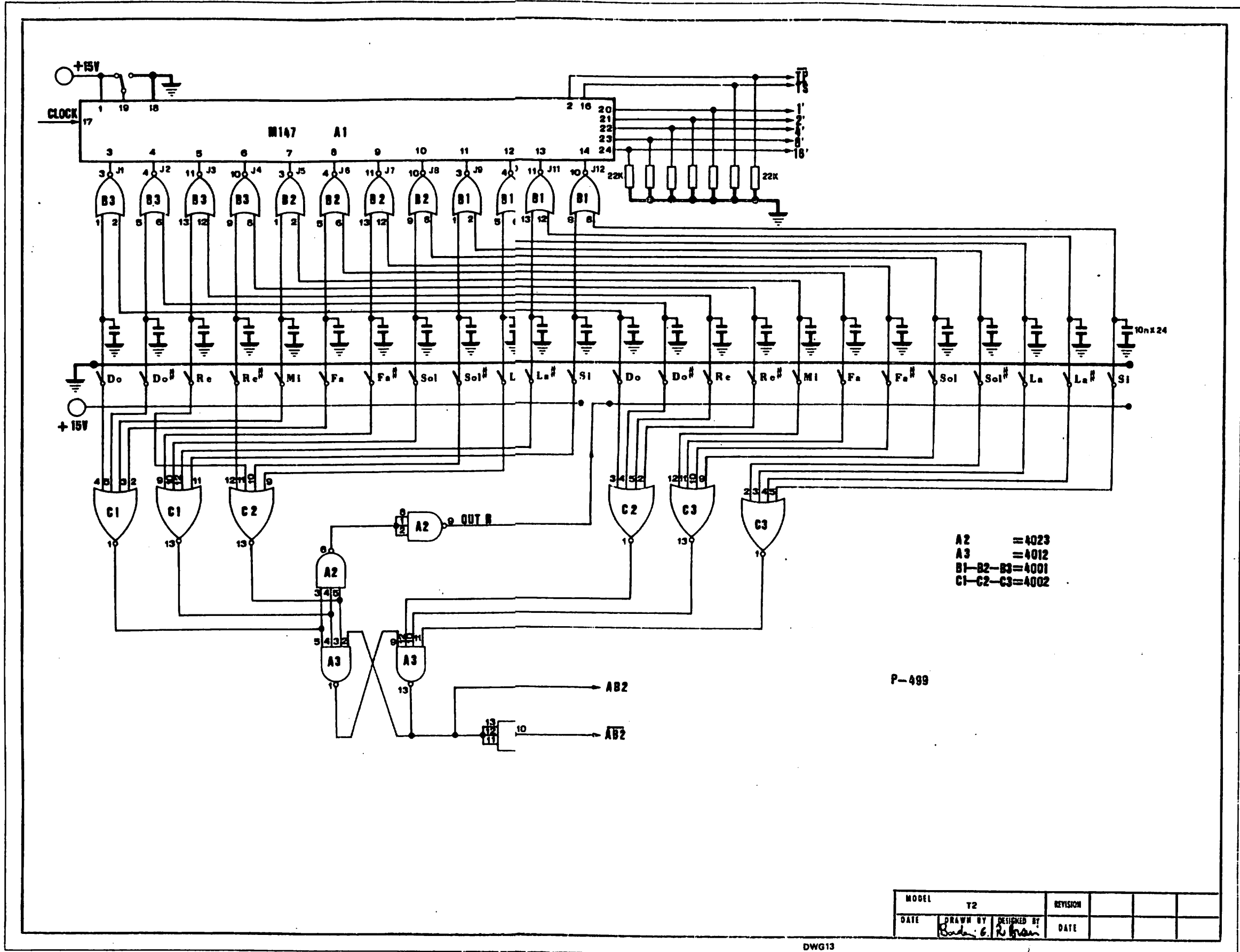
MODEL		T2		REVISION	
DATE	DRAWN BY	DESIGNED BY	DATE		
	B. G.	R. G.			



P-514

MODEL	T2	REVISION			
DATE	DRAWN BY <i>Babai G.</i>	DESIGNED BY <i>Rhrai</i>	DATE		

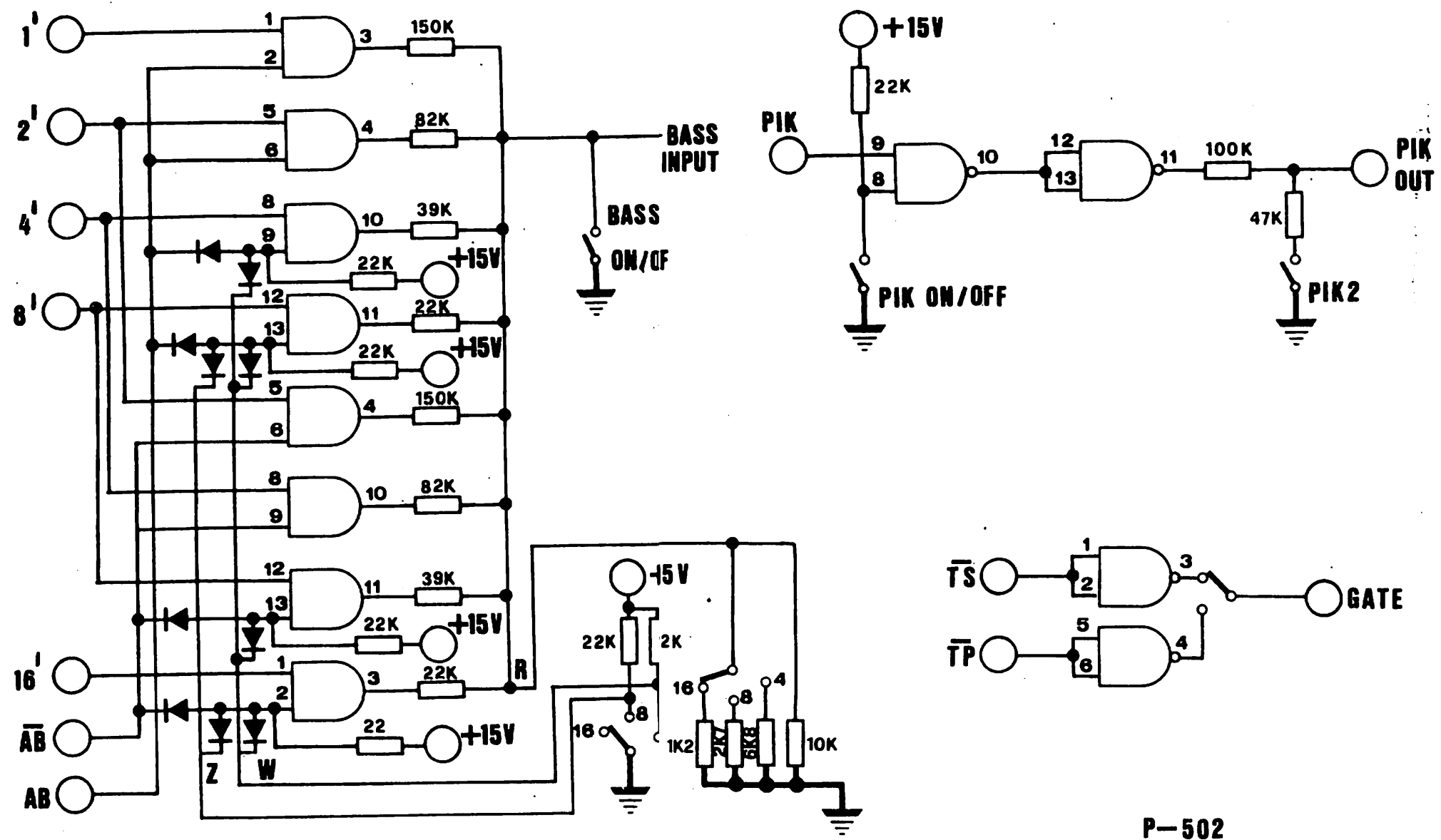




A2 = 4023  
 A3 = 4012  
 B1-B2-B3 = 4001  
 C1-C2-C3 = 4002

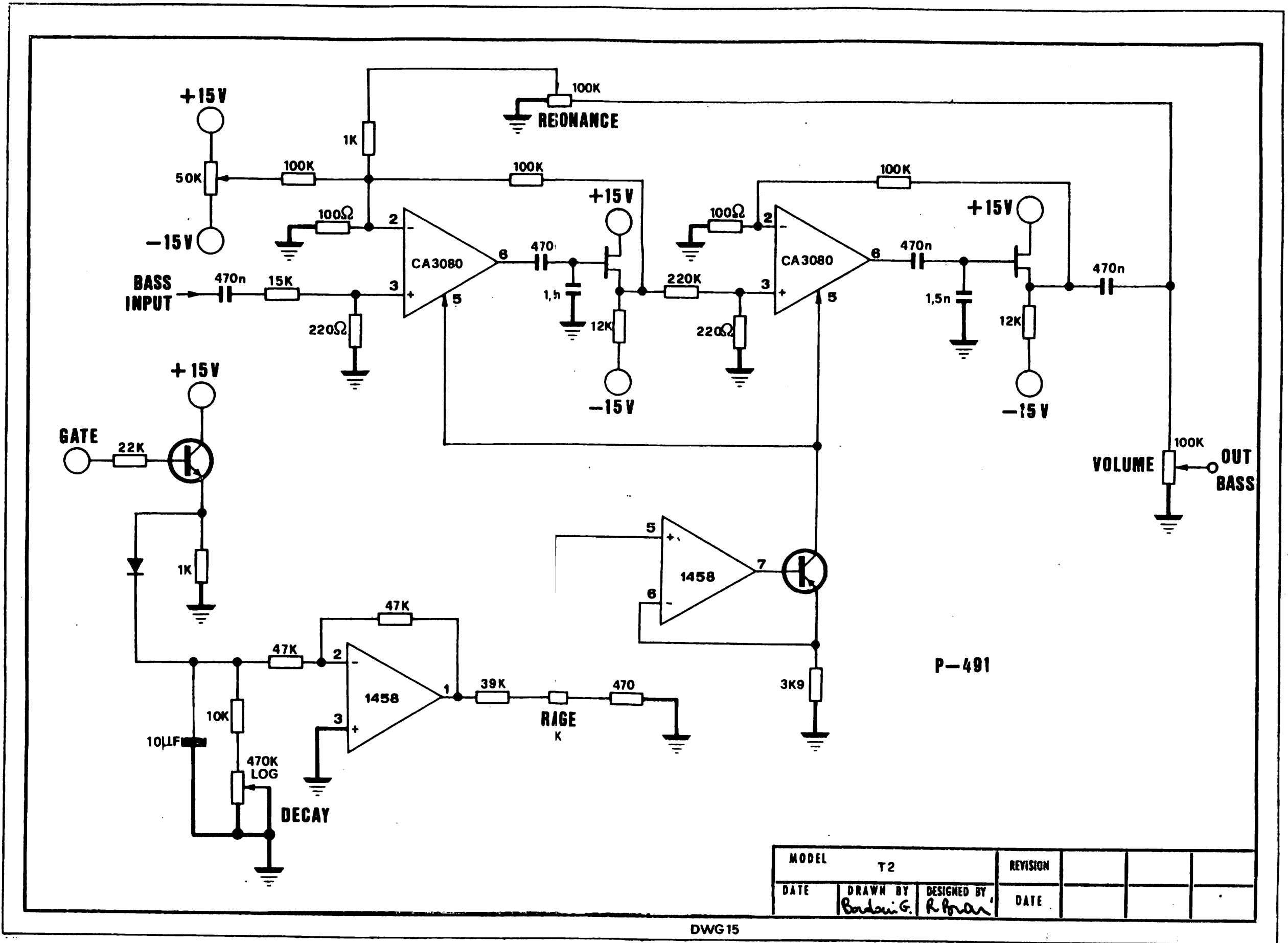
P-499

MODEL		T2	REVISION	
DATE	DRAWN BY	DESIGNED BY	DATE	
	<i>Bob C. R. Fran</i>			



P-502

MODEL	T2	REVISION			
DATE	DRAWN BY <i>Bordain S.</i>	DESIGNED BY <i>R. Brown</i>	DATE		



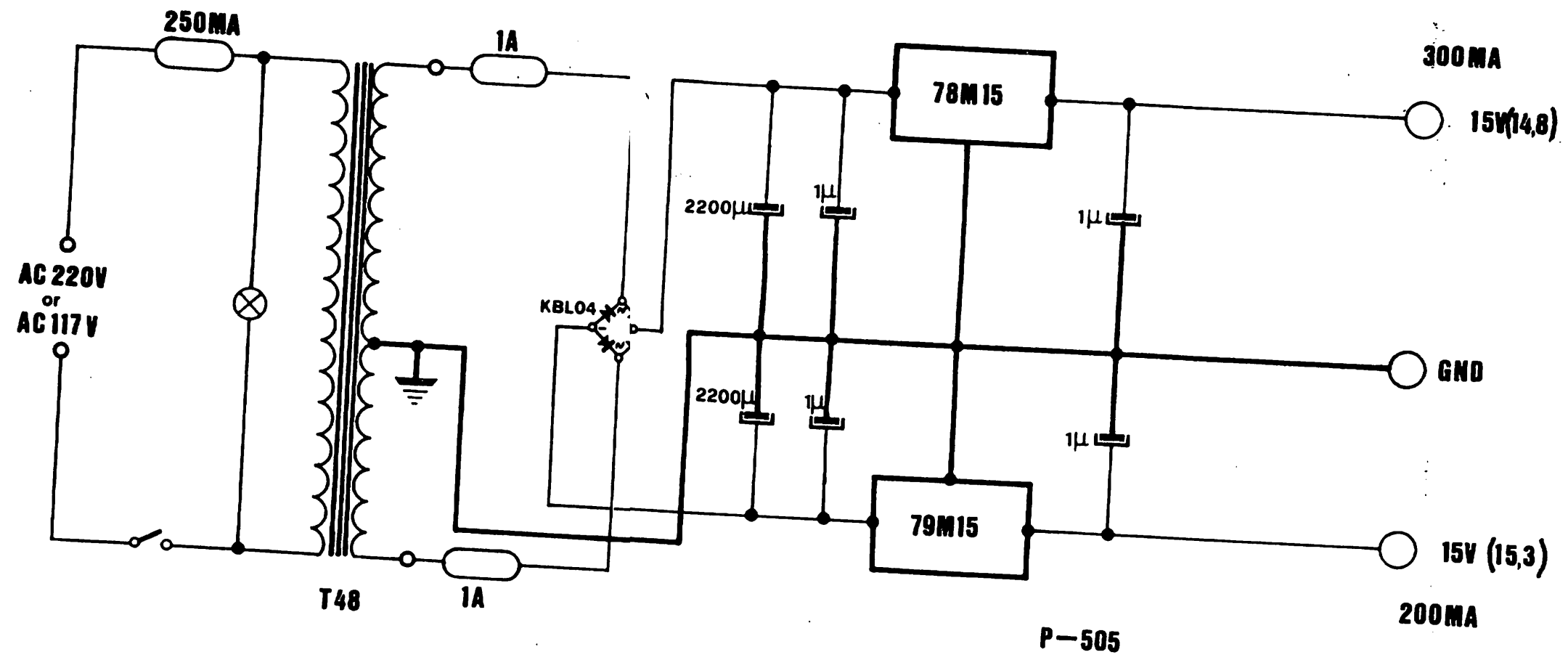
P-491

MODEL	T2	REVISION			
DATE	DRAWN BY <i>Baldwin G. R. Brown</i>	DESIGNED BY	DATE		

DWG15

**GENERAL**





MODEL	T2			REVISION			
DATE	DRAWN BY	DESIGNED BY	DATE				
	<i>Barlow</i>	<i>R. Man</i>					

DWG17

MAN.  PED.

BASS

PITCH BENDING

SUSTAIN

LENGTH

AUTO  ON/OFF

VOLUME

LOWER MANUAL MASTER

MODULATION RANGE

RATE VIBRATO TREMOLO

LOWER MANUAL

PRESET

DRAWBAR 0 2 3 4

UPPER MANUAL

PRESET

DRAWBAR 0 2 4

PERCUSSION

PERCUSSION VOL. DECAY

BASS

PERC. SUST. OFF OFF

MODE OTAGE

DECAY RANGE RESONANCE VOLUME

MODEL	T2	REVISION			
DATE	DRAWN BY Bordouis R. Fran	DESIGNED BY		DATE	

LITO - TIPO MICHELONI - Recanati Tel. 980908

CRUMAR S.p.A  
60022 CASTELFIDARDO ITALY  
c.p. 98  
Tel. (071) 79033 / 34